

Empowering Supply Chain Transparency:

Introducing STEPLogic TRACE



steplogic
trace

A solution for efficiency and compliance

STEPLogic TRACE is a comprehensive solution that supports cradle to grave tracking within the distribution center. STEPLogic TRACE was designed to manage the aggregation of serial numbers in a parent child relationship, creating efficiencies in managing the data without compromising quality.

The system has been audited and validated for FDA Part 11 compliancy as well. Additionally, STEPLogic TRACE enables companies to record serialized drugs, aggregate them by unit of measure, and then connect multiple systems, platforms and trading partners to view the supply chain in its entirety. STEPLogic TRACE allows for the serialization of every type of transaction or can be configured to manage capture of serial numbers just on inbound and outbound transactions. With the unique capabilities of the STEPLogic platform, users can create apps, integrations and custom end-points that enable companies to match the dynamically changing requirements of the DSCSA, FMD, and other country-specific serialization regulations. STEPLogic TRACE integrates with industry-leading repository system using GS1 EPCIS standards.

STEPLogic TRACE can also solve the food industries challenges around the Food Safety Modernization Act (FSMA) 204, which requires event and data tracking for designated food products across the supply chain using GS1 standards.

Due to the adaptability of the STEPLogic platform, it can be easily integrated with any manufacturing, packaging, warehouse or distribution system. This provides flexibility for any business process requiring advanced tracking capabilities.

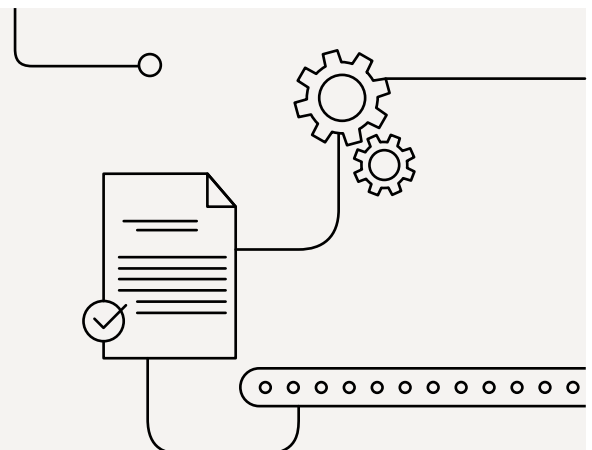


Blue Yonder certification

- BY 2009
- BY 2012
- BY 2017
- BY 2019
- By 2020
- BY 2021

EPCIS repo certification

- ANVISA
- Arvato NMVS
- Axway
- FMD
- SAP ATTP
- Solidsoft NMVS
- Tracelink
- Verifarma



2023 core release highlights

New Blue Yonder WM integration points

- Blue Yonder ASN generated by TRACE from direct to TRACE serial receipt interface

Receiving and shipping

- Ability to re-label SSCC topmost to a new SSCC topmost without scanning all children
- Improved transfer to children to new pallet to efficiently move “eaches” or “all”
- Better logging visibility to improve support diagnoses
- Increase efficiency to select multiple documents for closing
- Ability to combine decommission and unpack events

EPCIS Events

- Ability to order unpack events in conjunction with decommissioning of SSCCs
- Flexible inbound shipment XML interface to process records based on configuration
- Allows for manual building hierarchies in inventory
- Multi-threaded interface processing

General

- Re-engineering the archiving process to reduce hours of processing
- New archiving capabilities to store records beyond 2 years
- Installation improvements to perform app check and allow for ATTP to be installed
- Certified on SQL Server database

4

Major versions

49

New features

140

Bugs corrected

\$2.75m

Körber invested in STEPLogic Trace

50%

License revenue that is reinvested into R&D

2024 Roadmap

TRACE 7.8 (January 2024)

- Trace 7.7 but with compatibility to RP 2009

TRACE 8.2 (February 2024)

- STEPLogic 8 platform with multi-lingual
- Full integration to Blue Yonder GUI menu
- Android full barcode recognition / Google Store

TRACE 8.3 (September 2024)

- Reengineered screen building capabilities for reporting
- Easier table-auditing capability for GxP compliance
- Complex reporting with JRXML third-party
- Convert transactional apps into multiple languages
- Infrastructure changes including SSO, multi-profile security, favorites menu, enterprise multi-authentication, dashboard

2024

7.8

8.1

8.2

New release: STEPLogic 8 with Blue Yonder WM menu integration

Blue Yonder WM and STEPLogic work seamlessly together. No separate logins and no change to the business logic of STEPLogic. Execute STEPLogic TRACE and any customized apps of your choosing right from Blue Yonder menus.



STEPLogic TRACE Release/Support Schedule

Version	Release date	Support only
7.7	20 Oct 2023	No date yet
7.6	18 Aug 2023	No date yet
7.5	24 Mar 2023	31 Dec 2025
7.4	31 Dec 2022	30 Jun 2025
7.3	29 Sep 2022	31 Dec 2024
7.2	08 Jun 2022	30 Jun 2024
6.5	26 Feb 2021	30 Jun 2025
6.4	26 Jun 2020	31 Dec 2023
6.3	09 Jul 2019	30 Jun 2023
6.2	25 Jan 2019	31 Dec 2022
6.1	21 Dec 2017	31 Dec 2022



Körber Supply Chain Consulting, North America
680 Andersen Dr Ste 410, Pittsburgh, PA 15220
T +1.412.458.4010
sales.sc.pit@koerber.com
koerber-supplychain.com